
Public Meeting 3

Policy recommendations

October 26, 2009



BLENDON
COMMUNITY PLAN

Welcome and Introductions

- Ben Weiner, Project Manager
- Matt Brown, Planner
- Louis Clayton, Intern

- James Schimmer, Director

- What we do: Franklin County Planning
 - Development regulations
 - Long-range planning

Working Committee

- Representatives from community
- Help guide process

- Residents, property owners, business owners, township officials

Tonight's meeting

1. Presentation

- About the Blendon Community Plan
- Policy recommendations
- Streetscape and Community Identity proposals

2. Small group feedback

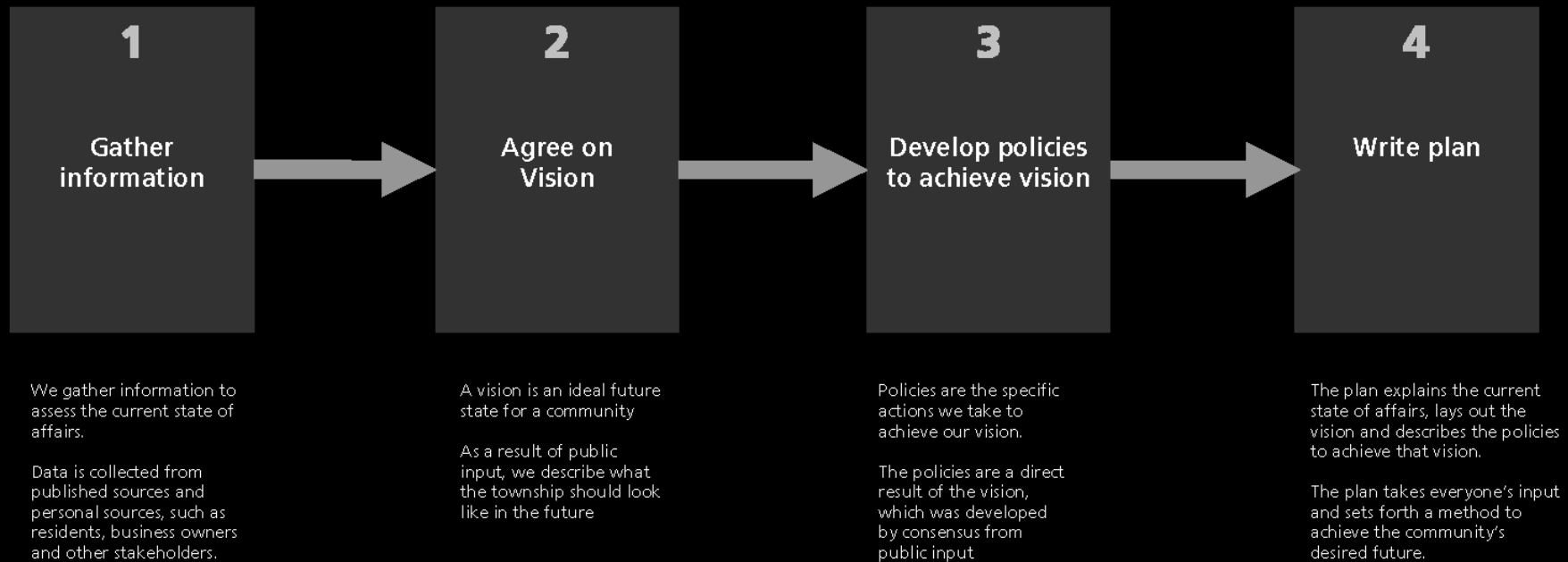
- Specific feedback
- Community Identity preferences

What is a plan?

- Way to achieve a community's future
 - How land is used (houses, offices, shops, farms, factories)
 - What new buildings look like
 - Where the parks are
 - How people get around (car, foot, bike, bus)
- What you want the future to look like

How do we complete the plan?

4 phases



Kitchen example

- Kitchen plan
 - What we want the kitchen to look like in the future

Kitchen plan

■ Ask questions-

- What do we like about the kitchen we have now?
- What *don't* we like?
 - "I like my appliances"
 - "I don't have enough counter space"
 - "The floor is in bad shape"

Kitchen plan

- "I like my appliances"
- "I don't have enough counter space"
- "The floor is in bad shape"

■ Set vision

- "Appliances: current appliances, in good working order"
- "Counters: more counter space"
- "Floor: a new floor"

Kitchen plan

■ Vision

- "Appliances: current appliances, in good working order"
- "Counters: more counter space"
- "Floor: a new floor"

■ Plan recommendations: steps we take to achieve the vision

- Clean the refrigerator coils, perform regular maintenance
- Replace desk area with new counters
- Replace vinyl floor with another material, wood or laminate

Kitchen plan

■ Recommendations

- Clean the refrigerator coils, perform regular maintenance
- Replace desk area with new counters
- Replace vinyl floor with another material, wood or laminate

■ Carrying out recommendations (implementation)

- Easier to do some, rather than others
- But- a plan is in place if resources become available

Back to our Community Plan

- What we like, what we don't like
- Vision for the future
- Recommendations to achieve the vision (tonight)

- Why it's important to have a plan
 - Community weighs in on new development
 - Gives predictability: residents, land owners, developers – Confidence in your investment
 - No funding attached
 - Communicates priorities to leaders

How do we complete the plan?

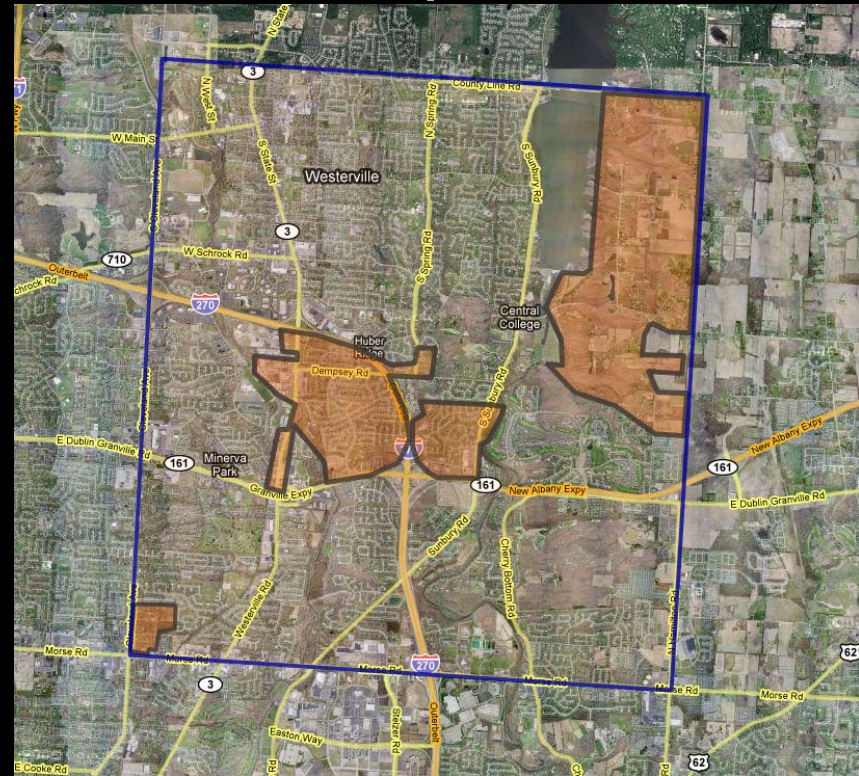
Public meetings

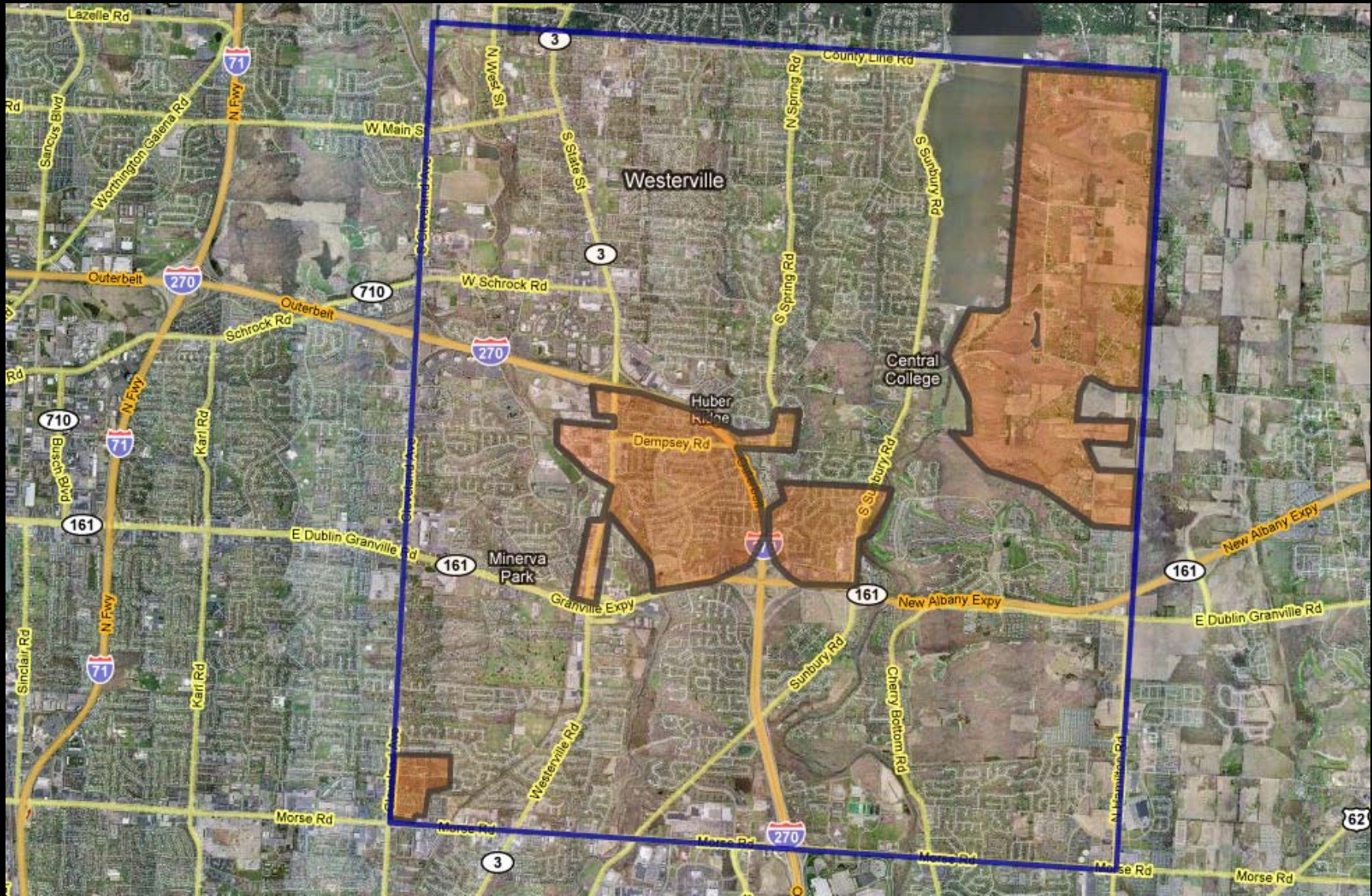


Where are we planning?

- Unincorporated Blendon Township

- Huber Ridge
- Sunbury Woods
- Cleveland Heights
- East of reservoir
- Small pockets





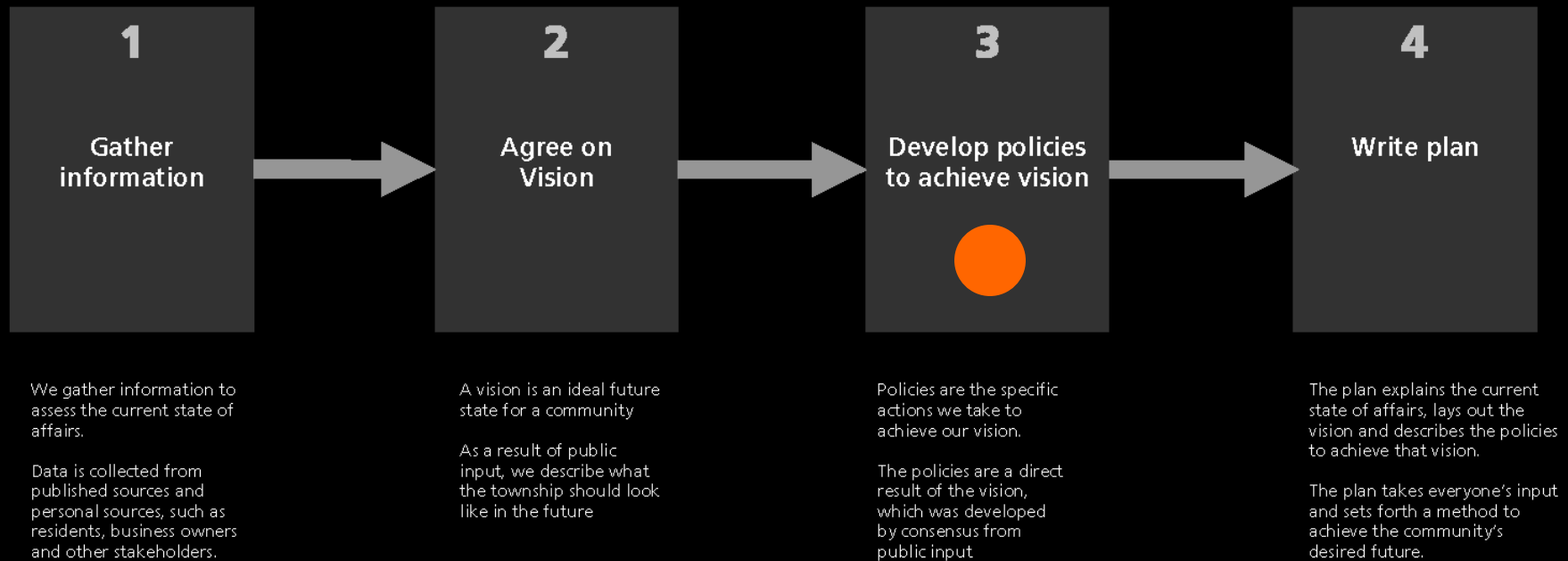
Involvement and Transparency

- Materials on website

- www.franklincountyohio.gov/commissioners/edp/planning/blendon
- tinyurl.com/blendon

How do we complete the plan?

4 phases



Tonight: Policy recommendations

- Product of Input + Visioning phases
 - Public input primary factor

- Full feedback results: tinyurl.com/blendon
 - Now: overview



Last time

1. Vision Statements

- Describes the future in words
- Divided into topic areas

2. Vision Maps

- Describes the future graphically
- Land use, bikeways, sidewalk priorities

This time: Achieving the vision

- Policy recommendations
 - Help achieve the vision
 - Explain what, why, who

- Document: full text
- Tonight: the highlights

Visions for the future

- Maintaining character of neighborhoods
 - Health of environment
 - Improving parks
 - Easier walking, biking
-
- You will evaluate specific policies

Additional feedback

- Improving overall identity
- Establishing gateways
- Improving state of Westerville Road



- Design possibilities
 - Community identity
 - Condition of Westerville Road



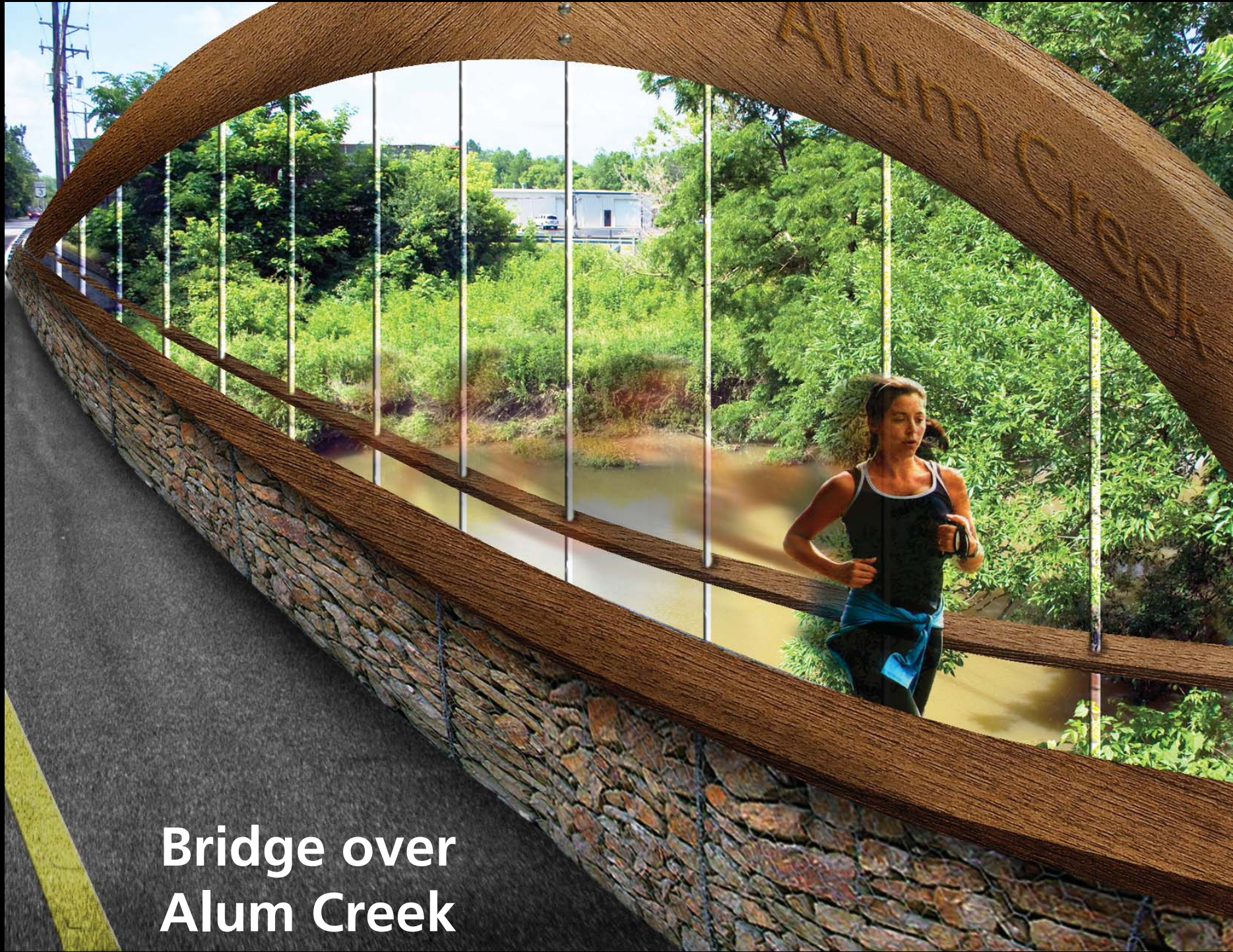
Glengary



Glengary



**Bridge over
Alum Creek**



**Bridge over
Alum Creek**



Auto sales



Auto sales



Streetscape



Streetscape

Gateway signs



Cleveland Heights

Sunbury Woods



Huber Ridge

East of
Big Walnut Creek



Cleveland Heights



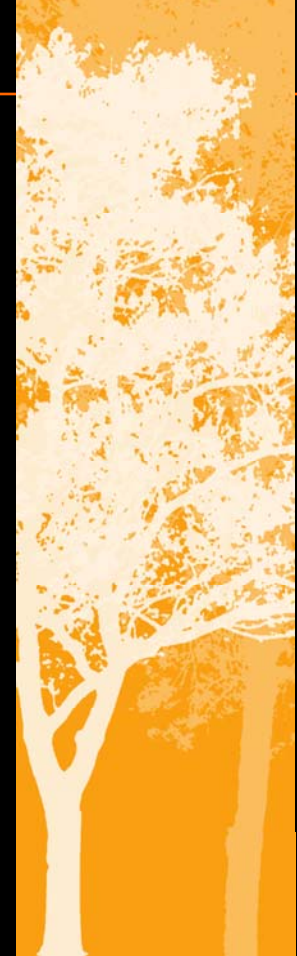
Huber Ridge



Sunbury Woods



Rural East



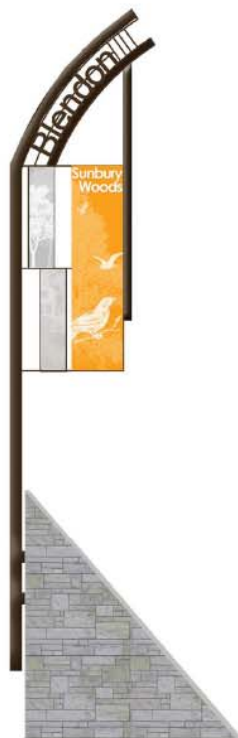
Sunbury Woods



Banner



Logo



Option A



Option B



Option C



Entrance



Entrance 1



Entrance 2



Entrance 3

Street signs



Cleveland Heights

Sunbury Woods



Huber Ridge

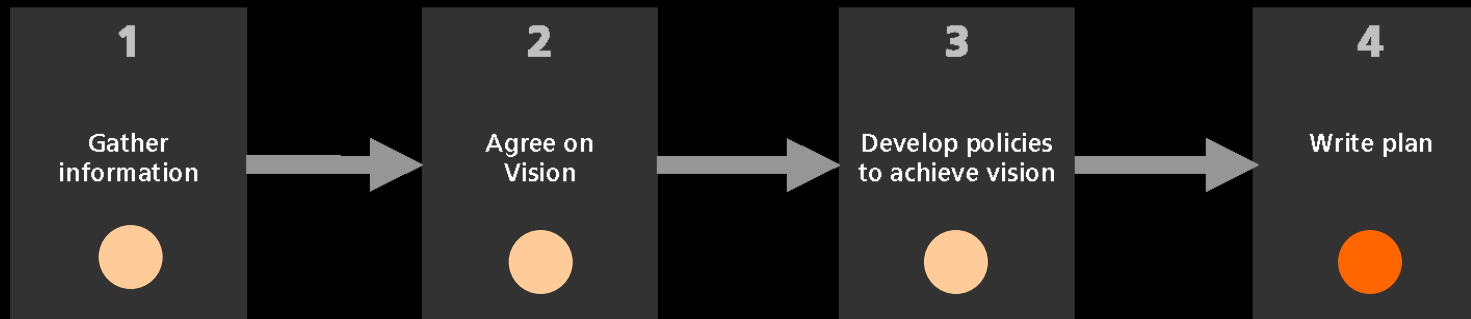
East of
Big Walnut Creek





Next steps

- Tonight: gather feedback on policies
- Next meeting: Blendon Community Plan
 - Monday, February 8 - 6:30 to 8:00 p.m.
 - Blendon Township Senior Center



Next

- Small group feedback
 - Design possibilities
 - Policy recommendations

- This room
 - Blue (front)
 - Yellow (rear)

- Other room
 - Red and Green

FINAL PUBLIC PRESENTATION
BLENDON COMMUNITY PLAN



FEB 8 2010

MONDAY FEB. 8 6:30PM · BLENDON TOWNSHIP SENIOR CENTER

Thanks for coming!

