

Public Meeting 1

September 27, 2010



BLACKLICK-MADISON
AREA PLAN

Welcome and Introductions

- Ben Weiner, Project Manager
- Matt Brown, Planner
- Devin Keithley, Intern
- Anna Thomas, Assistant

- James Schimmer, Director
- Lee Brown, Planning Administrator

- What we do: Franklin County Planning
 - Development regulations
 - Long-range planning

Working Committee

- Representatives from community
- Help guide process

- Residents, property owners, business owners, township officials

Tonight's meeting

1. Presentation: About the Blacklick-Madison Area Plan
2. Small groups
 - Specific feedback
 - Mapping exercises

What is a plan?

- Vision for a community's future
 - How land is used (houses, offices, shops, farms, factories)
 - What new buildings look like
 - Where the parks are
 - How people get around (car, foot, bike, bus)
- What you want the future to look like

Kitchen example

- Kitchen plan
 - What we want the kitchen to look like in the future

Kitchen plan

■ Ask questions-

- What do we like about the kitchen we have now?
- What *don't* we like?
 - "I like my appliances"
 - "I don't have enough counter space"
 - "The floor is in bad shape"

Kitchen plan

- "I like my appliances"
- "I don't have enough counter space"
- "The floor is in bad shape"

■ Set vision

- "Appliances: current appliances, in good working order"
- "Counters: more counter space"
- "Floor: a new floor"

Kitchen plan

■ Vision

- "Appliances: current appliances, in good working order"
- "Counters: more counter space"
- "Floor: a new floor"

■ Plan recommendations: steps we take to achieve the vision

- Clean the refrigerator coils, perform regular maintenance
- Replace desk area with new counters
- Replace vinyl floor with another material, wood or laminate

Kitchen plan

■ Recommendations

- Clean the refrigerator coils, perform regular maintenance
- Replace desk area with new counters
- Replace vinyl floor with another material, wood or laminate

■ Carrying out recommendations (implementation)

- Easier to do some, rather than others
- But- a plan is in place if resources become available

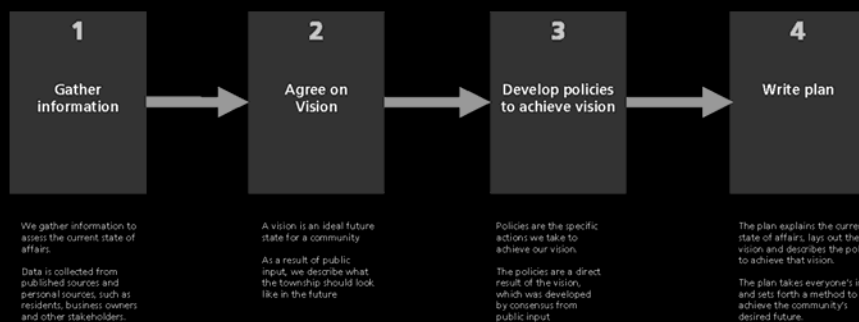
Back to our Community Plan

- What we like, what we don't like
- Vision for the future
- Recommendations to achieve the vision

- Why it's important to have a plan
 - Community weighs in on new development
 - Gives predictability: residents, land owners, developers – Confidence in your investment
 - Communicates priorities to leaders

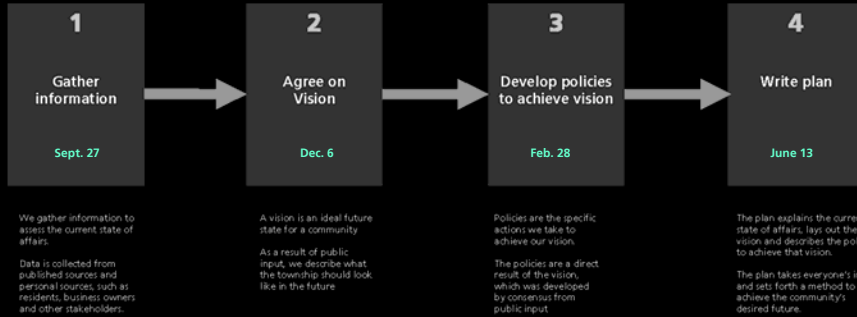
How do we complete the plan?

4 phases



How do we complete the plan?

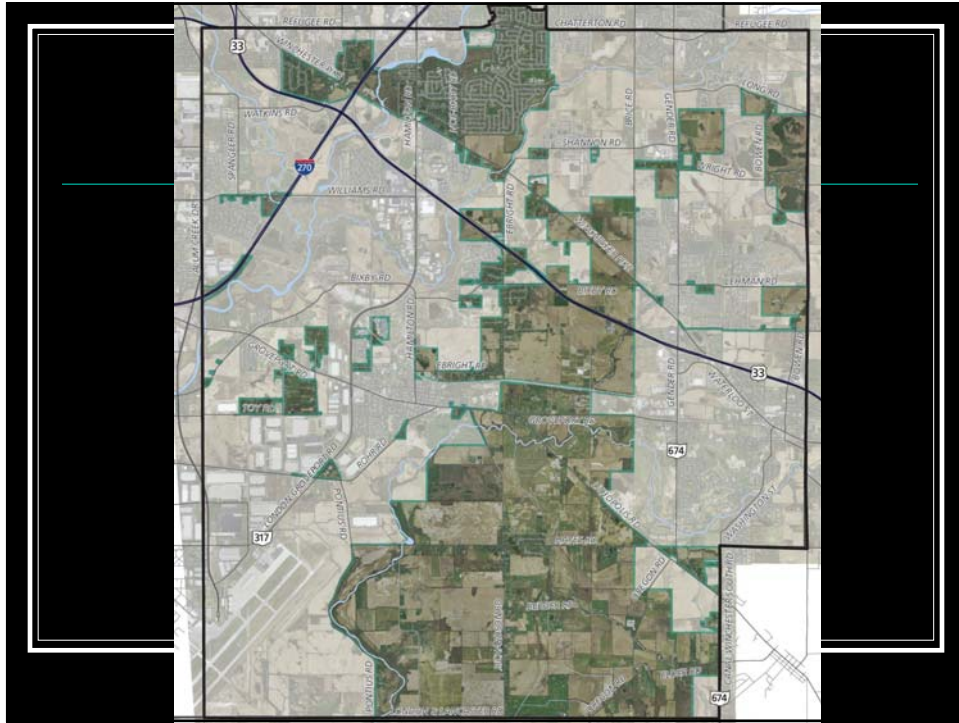
Public meetings



Where are we planning?

- Unincorporated Truro Township, south of Refugee Road
- Unincorporated Madison Township, except west of Pontius and south of Rohr Road
 - Blacklick Estates
 - Agricultural areas
 - Small pockets



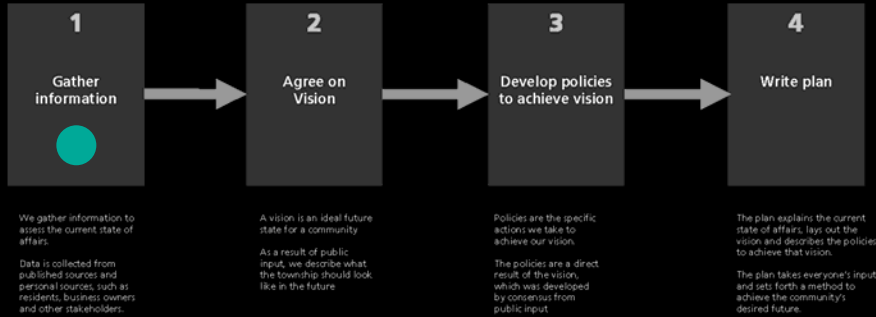


Involvement and Transparency

- Materials on website
 - www.franklincountyohio.gov/commissioners/edp/planning/blacklick-madison
 - tinyurl.com/blacklickmadison

How do we complete the plan?

4 phases



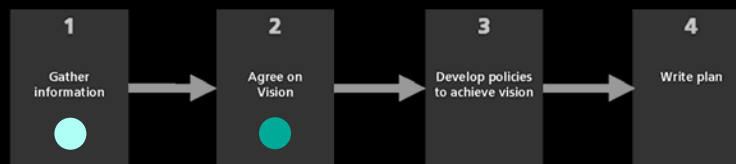
Current Conditions Report

- Product of Information-gathering phase
 - Published data
 - Stakeholder interviews
- Overview of where the community is today
 - tinyurl.com/blacklickmadison



Next steps

- Tonight: gather information
- Next meeting: Review vision
 - Monday, December 6 - 6:30 to 8:00 p.m.
 - Asbury United Methodist Church



Next meeting

- At the meeting
 - Review public input
 - Get public input on future vision

Next

- Small group feedback
 - Check your name tag
- Back of room: Red
- Front of room: Blue
- Right: Yellow
- Left: Green

Thanks for coming!